



NEWSLETTER

Australian Society of Miniature Art Tasmania Inc.
ABN 62 906 905 330 (Society not registered for GST)



Patron

*Her Excellency Professor the
Honourable Kate Warner, AC,
Governor of Tasmania*

April May June 2018

Dear Members,

As I write, the outside temperature has only just reached double figures due to a "bracing" stiff breeze and icy showers. The price of power is easily forgotten as I move closer to the heater and turn the switch up a notch!

Hopefully, our Painting Day at Evandale will prove to be more pleasant as we gather to share our skills and ideas and take the opportunity to catch up with members from across the State. Always such an enjoyable social time.

Annual Awards Exhibition

All members would have received an early mail-out of membership forms, information sheet and entry forms for exhibiting members. It is hoped that members will have paintings either produced or planned ready to enter in each of the 4 categories.

Please ensure the entry form is read carefully, particularly regarding sizing, packaging and postage.

Accompanying this newsletter is a small form that must be sent with your paintings - this greatly assists hanging and packaging.

Derwent Sailing Squadron

The D.S.S. is of necessity, a new venue for us. We have devised a hanging method to comply with the special requirements of this art space.

It is sincerely hoped we can hang all entries. If problems do occur with regard to space, it may be necessary to delete the smallest category.

Be assured, everything possible will be done to prevent such a disappointing event happening.

Awards

A gold, silver and bronze medal will be awarded in each category plus a People's Choice. A Founder's Award will again be presented.

Calendars

Our popular calendar will again be produced, depending of course on 13 original paintings (6cmx9cm) being submitted to Pat for scanning. Once scanned, they will be returned a.s.a.p.

Early postage for scanning is welcomed and kept on file by the printer until the required number is received prior to going to print.

An order form will accompany the next newsletter in September.

The final date for submitting paintings is Friday, 14th September.

The price is unchanged at \$13 each - a welcome gift.

Cards

Can be ordered at any time and paid for prior to printing.

The cards are of professional quality, costing \$3.50 each.

The image size is 6cmx9cm or very close to that measurement to suit the card size.

Original paintings sent to Pat for scanning will be returned a.s.a.p.

Bicheno

Plans for this exciting workshop are proceeding well.

The class is now full, but a waiting list is available in case of cancellations.

Any participant who has not confirmed their place or their wish to purchase a "kit", please do so a.s.a.p.

All payments are required by the Treasurer by 19th October.

Appreciation

Our sincere appreciation is extended to Carlene Vickers, who has retired due to ill-health after a number of years as Membership Secretary and Calendar Co-ordinator. Both of these tasks have benefitted greatly from Carlene's excellent management skills and ability to get the job done efficiently and without fuss. Thank you so much, Carlene, and our Best Wishes for a rapid and full recovery for yourself and Ted.

Thank you to James Bowler for accepting the important position of Membership Secretary on Carlene's retirement. Your willingness to take on this task is appreciated, James. You can be assured of the support of the Committee and Members.

Nomination Forms/A.G.M.

The A.G.M. will again be held at Gill and Greg's Place, Collins St., Evandale (a reasonably central venue) on Saturday, August 25th, 10:30-3:00pm. B.Y.O. lunch will be followed by a painting afternoon. It is hoped this important meeting will be well supported.

Enclosed are nomination forms to be returned to the Secretary, Sandra Cumming, no later than Saturday, July 28th. If you feel you are able to support the Society, even for a year, your nomination as a Committee member will be very much appreciated.

Website

John Humble, our website manager, has requested members please supply him with more good quality photographs to rotate through the home page. He would also appreciate further contributions toward the artists' profiles page. A short write-up, plus three or so photographs of paintings, would be adequate and go toward making the website more interesting and informative.

Invitation

An invitation is enclosed to the Annual Awards Exhibition at the D.S.S. Please use this to invite friends and family to support the Society by attending the Opening on Saturday, 8th September, at 2:00pm.

All are welcome.

Pat

CONTACT DETAILS

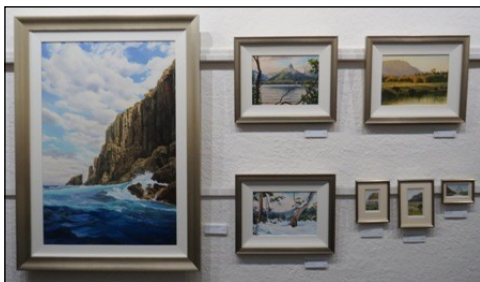
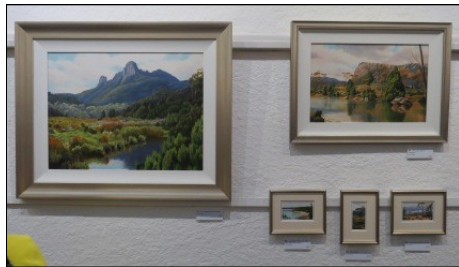
Joan Humble's 80th Birthday Exhibition at the Lady Franklin Gallery

New Horizons

This was Joan Humble's 12th solo exhibition of traditional landscape paintings of Tasmania. Included amongst the paintings was a recent Glover Finalist, titled *Elevation*. The painting sizes ranged from miniatures (5 cm x 10 cm) up to large works (60 cm x 120 cm). The exhibition received a great deal of media attention and a write-up in *Australian Artist* magazine. We can only hope that Joan continues to paint and teach for a long time to come.



The exhibition was opened by Hobart Plastic Surgeon, Professor Frank Kimble



Painting Day

Greg and Gill's Place, Evandale - Saturday, 23rd June, 2018

Fine weather coincided with a great turnout for our most recent painting day. Most people were able to produce some good work, as well as socialise! We look forward to the next painting day, coinciding with our Annual General Meeting.



Glenda and her lovely tonal work



A group shot



Detailed botanical painting in miniature by Denise

Painting Day continued...



James, Joan and John working diligently

Rosemary and Jennifer hard at it

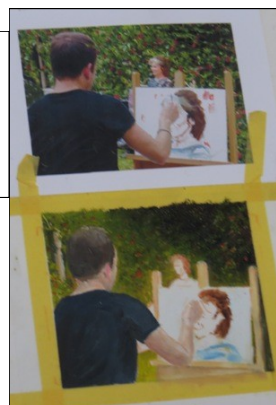


We tried hard to embarrass Sandra by singing to her on her birthday!

A lovely, sunny day. It was coolish outside, but warm in.



James finally put paint to polymin after he had collected the membership fees



New member, Robyn, demonstrating her watercolour skills in this beautiful portrait



Most of the Launceston ladies

An unusual subject by Elaine.



Joan's classic style



Coloured pencils run in the family - Sandra and Pat

